

LANDSWEEP™

MAKING PEACE OF MIND PART OF THE DEAL

Great care is needed to confirm the redevelopment feasibility of prime brownfield land. Zetica's comprehensive site surveys are designed to aid swift detection of subterranean features that could become costly engineering problems. Survey findings also prove vital in quantifying the legal liabilities inherent to land sales and purchase. In addition, audit findings often help to prove strict compliance with environmental legislation, where risk assessment requires total site coverage to trace all possible sources and pathways of contamination.

Zetica's Landsweep™ is a cost-effective service that combines sophisticated, non-intrusive sensing technologies to ensure that hidden sub-site anomalies and disturbed ground are fully identified and correctly interpreted. Pipelines, abandoned storage tanks, contaminated waste deposits and remnants of earlier engineering structures are typical potential hazards. All can be pinpointed accurately, ready for detailed, conventional investigation.

Engineering and environmental surprises that could lead to costly mid-project replanning and unwanted remedial action can now be taken into account before major financial commitments are made.

Local authorities find Landsweep™ a vital element in implementing Section 57 Part IIa investigation strategies, with the advantages of being site-wide, non-intrusive and cost-effective. Landsweep™ can also reveal concealed contamination and is an effective option for property owners who need site-wide risk assessments to avoid unexpected litigation or designation as a special site.



Landsweep™ detected and mapped many previously unknown features on this brownfield site in Northeast England

SAFEGUARDING PUBLIC AMENITIES

Potential savings in the order of tens of thousands of pounds were made recently at a major redevelopment site in the south of England. Available maps indicated the presumed route of a water main serving a local community of many thousand people.

A Zetica survey swiftly showed this information to be dangerously incorrect – the pipeline was shown to cross the site elsewhere. This enabled a timely replanning of engineering work before construction began. The substantial cost of damaging a major pipeline – and compromising a vital community amenity – was avoided.

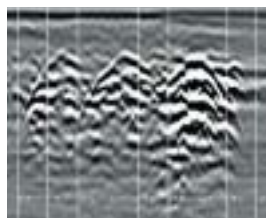
In the same survey, Zetica also identified a previously unknown buried toxic waste site requiring specialist remediation.

ENVIRONMENT PROTECTION

Prior to a major car park development on used land in central England, Zetica helped to identify the source and pathway of serious contamination affecting a local waterway used by the public. Intrusive methods of site investigation, including drilling, had failed to find the source of contamination below the site.

Within half a day, Zetica not only identified the source to be a sump containing volatile waste but had also mapped a buried concrete culvert. This was acting as a pathway for contamination to the waterway. The material was removed safely and the contamination route closed before redevelopment began.

Other Zetica projects have involved the identification of hazards on former gas works sites, re-establishing the position of storage tanks beneath a petrol station, confirming zero contamination beneath concrete hard standing and defining areas of likely contamination on very large sites.



The presence of three abandoned underground storage tanks were detected by Landsweep™ on a brownfield site

A GLOBAL PROFILE

Zetica has extensive UK, European and global experience, working wherever an informed understanding of the sub-site environment supports engineering improvement and investment work.

Successfully completed projects include:

- Greenwich Millennium Village – mapping buried foundations and evidence of disturbed ground
- A55 Anglesey – detailed mapping of depth to bedrock, bedrock rippability and voids on proposed road route
- M20, Kent – locating subsurface channel cross-cutting motorway and shallow voids
- Manchester – detailed mapping of edges of closed landfill, base of landfill and thickness of saturated leachate layer
- Newcastle – mapping buried foundations, contamination and unexploded ordnance on former power station site
- Cork, Ireland – mapping services on ring road for road developments as well as depth to bedrock and evidence of sinkholes in tunnel landfall area
- USAF/RAF bases, UK – detection of buried pits, unexploded ordnance and mapping of buried services
- Copenhagen, Denmark – detailed detection of unexploded ordnance on naval firing range prior to large-scale property development
- Projects in Europe, North America, South America, Africa and Asia

Selected clients include:

Shell Global Solutions

BAE Systems

WSP Engineering

Royal Air Force

Defence Estates

Taylor Woodrow plc

AEA Technology plc

British Airways Authorities

Norwest Holst Soil Engineering

Dragon Mineral Resources

BHP Mineral Exploration

Environmental consultancies

Engineering consultancies

Local authorities



zetica

Holdan House, 26 Bridge Street, Witney, Oxfordshire OX8 6HY, UK

tel: +44 (0) 1993 706767 fax: +44 (0) 1993 773040

email: info@zetica.com <http://www.zetica.com>

Zetica is a brand name of Geo-Services International UK Ltd.